

# HOUSE TYPE B4

TERRACED - 3 BEDROOM HOUSE

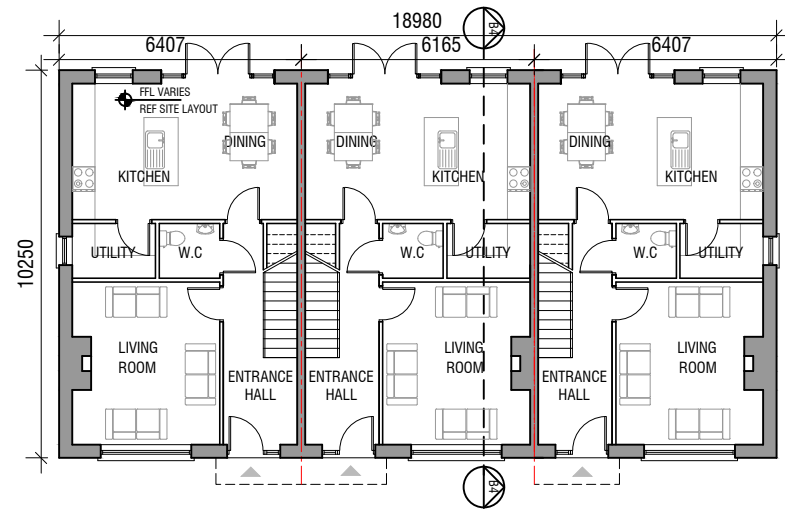
GROUND FLOOR 56.1 m<sup>2</sup>  
FIRST FLOOR 53.8 m<sup>2</sup>

**TOTAL 109.9 m<sup>2</sup> / 1183 ft<sup>2</sup>**

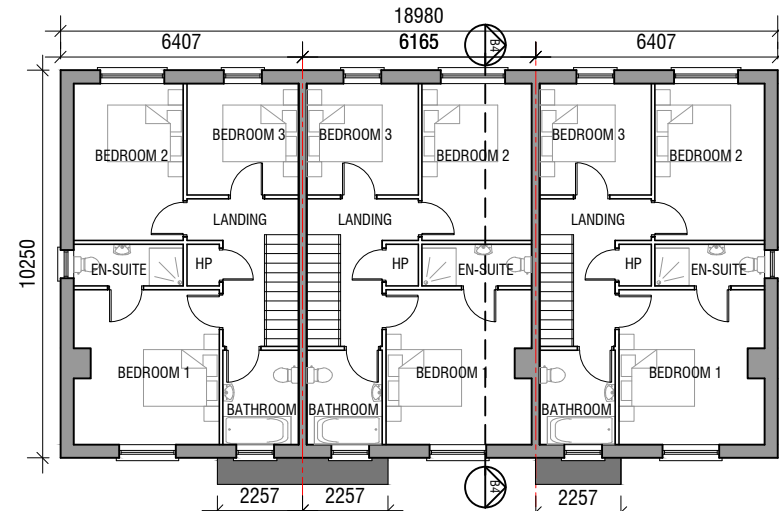
## PROPOSED MATERIALS

ROOF: SELECTED BLUE / BLACK TILE OR SIMILAR APPROVED  
CANOPY: ZINC OR SIMILAR APPROVED  
WALLS: PAINTED RENDER / BRICK WHERE INDICATED  
WINDOWS: GREY OR APPROVED COLOUR  
DOORS: HARDWOOD / PVC TO SELECTED COLOUR

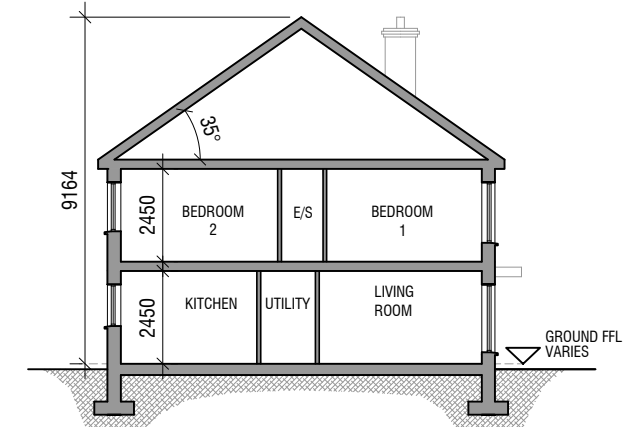
©THIS DRAWING IS COPYRIGHT  
THIS DRAWING IS FOR PLANNING PURPOSES ONLY



**B4 GROUND FLOOR PLAN**  
SCALE 1:200  
NORTH POINT VARIES  
REFER TO SITE LAYOUT PLAN



**B4 FIRST FLOOR PLAN**  
SCALE 1:200  
NORTH POINT VARIES  
REFER TO SITE LAYOUT PLAN



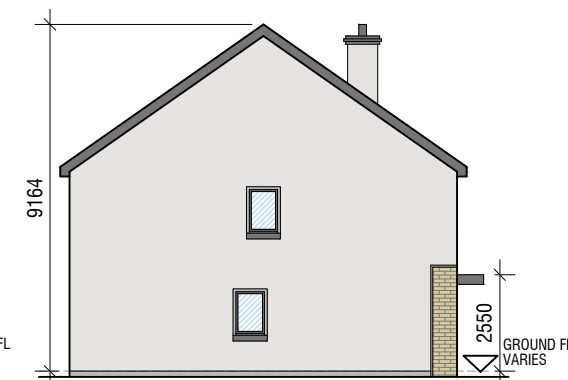
**SECTION B4**  
SCALE 1:200



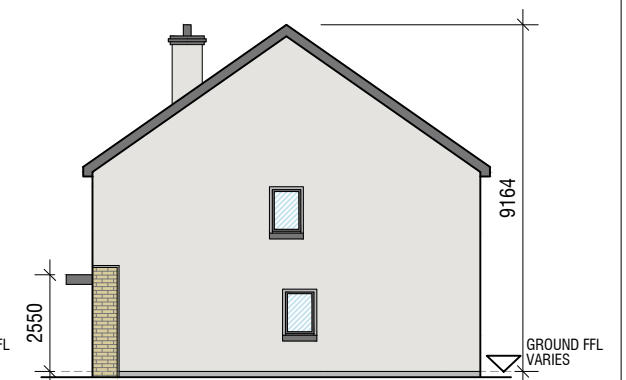
**B4 FRONT ELEVATION**  
SCALE 1:200



**B4 REAR ELEVATION**  
SCALE 1:200



**B4 LHS ELEVATION**  
SCALE 1:200



**B4 RHS ELEVATION**  
SCALE 1:200

REV.:	DATE:	DRWN.:	DESCRIPTION:	INT:

**GCA**  
**GERALDINE COUGHLAN**  
ARCHITECTS



Ard-Na-Greine, Enniskeane, Co. Cork 086-8259794 info@gca.ie

PROJECT: RESIDENTIAL DEVELOPMENT, GRANGE, DOUGLAS, CORK

DRAWING: HOUSE TYPE B4  
3-BED TERRACE

SERIES: PLANNING SCALE: 1:200

BD

CLIENT: WESTBROOK

A3

DATE: 12/11/2018

JOB NO: 16090

DRAWING NO:

**B4**